

# Morton Standard

**Morton Quality. Classic Designs. A Price Point You'll Love.**



**Classic designs, without all the frills. Choices, but not too many decisions. A building to stand the test of time.**

**Needing extra storage for your residence or farm? The new Morton Standard line of simple storage buildings is the perfect solution for your UTVs, boat, vehicles, machinery, or even hay.**

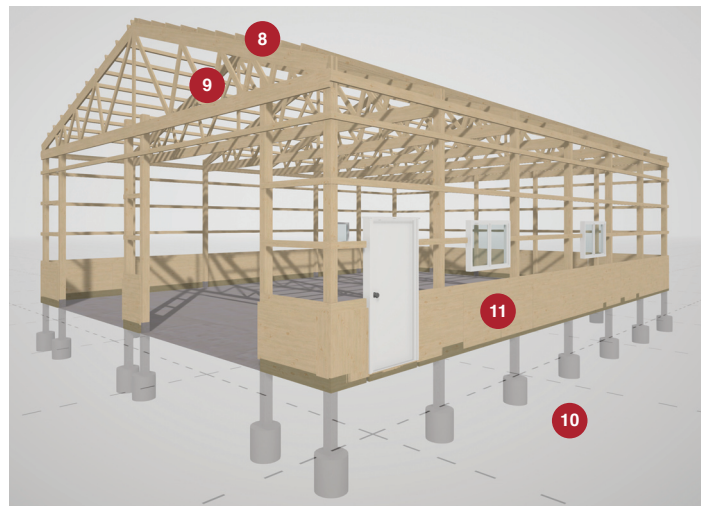
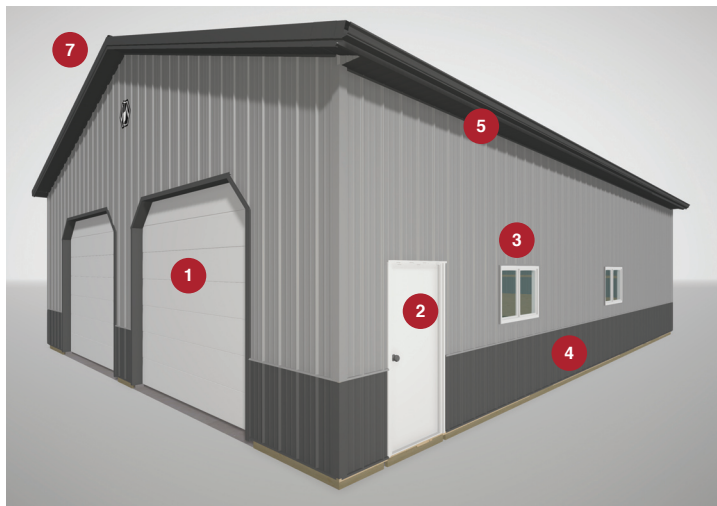


## Morton Standard

Morton Standard includes our most popular building dimensions and features that are pre-manufactured for efficient production and shipment, and constructed by Morton crews at your property, delivering the Morton quality to last for generations at a price point you'll love.

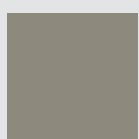


Our Morton Standard building line provides many of the great optional features for your building to include:

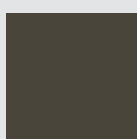


- |                                    |                                       |   |
|------------------------------------|---------------------------------------|---|
| 1 Wood or AlumaSteel Sliding Doors | 5 1' Overhangs (vented or non-vented) | 9 Straight or Raised Chord                  |
| 2 Walk Doors                       | 6 Gutters and Downspouts              | 10 Morton Foundation System or Wood Columns |
| 3 Windows                          | 7 Ridgecap or Vent-A-Ridge            | 11 Protective Liner                         |
| 4 Wainscot                         | 8 4/12 Pitch Roof                     |   |

### AND CHOOSE FROM THESE POPULAR COLOR OPTIONS TO MATCH YOUR STYLE:



Beige



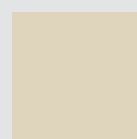
Brown



Charcoal



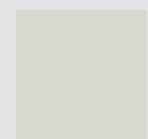
Evergreen



Ivory



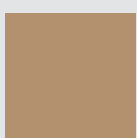
Red



White



Silver



Tan



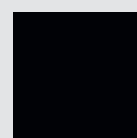
Burgundy



Marine



Navy



Black



Vintage Metallic

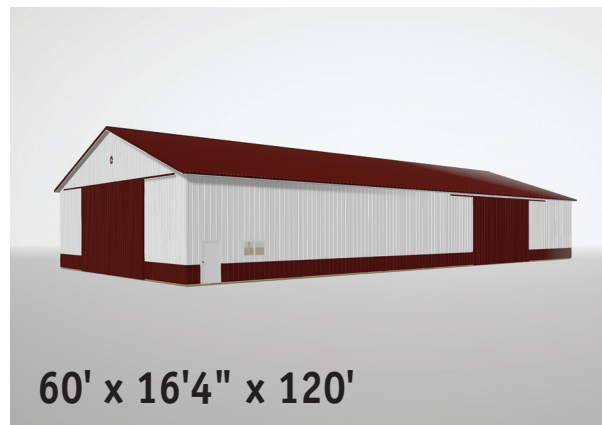
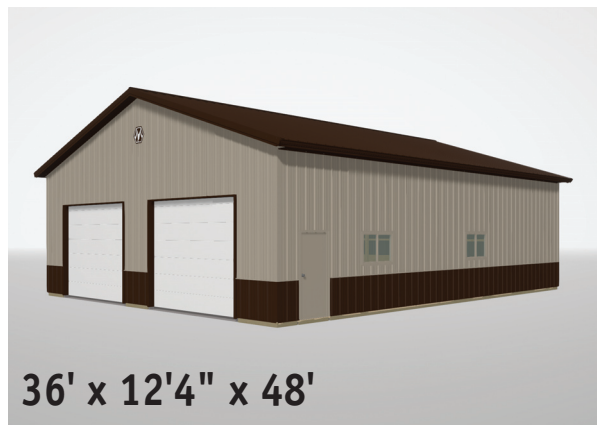
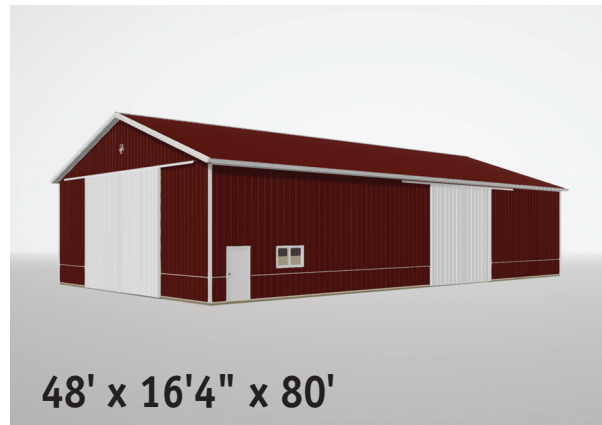
## Morton Quality, Guaranteed

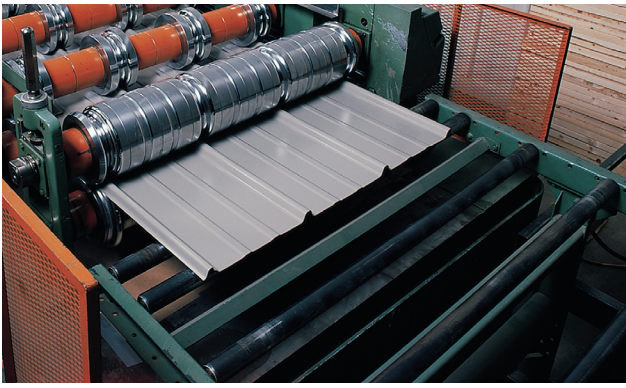
It's a packaged offering, but not a building kit. Your local Morton sales consultant will work with you to design your Morton Standard building with the available dimensions and features. The building is then produced in one of our manufacturing plants with the same high-quality and long-lasting materials that Morton is known for.

After a Morton-employed truck driver delivers the materials to your property, our Morton craftsmen will construct your building on-site, as with all Morton buildings. When the construction is complete, your Morton Standard building is covered by our industry-leading warranty that is handled in-house, includes materials and labor, and is not pro-rated. You can have peace of mind knowing that your building will be built to stand the test of time.

## Our Most Popular Morton Standard Packages

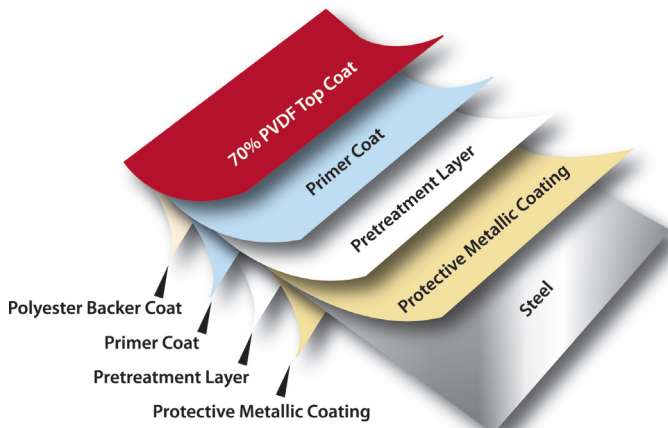
Get started with one of our most popular Morton Standard building packages that include materials, delivery and labor. Talk to your local sales consultant about other options available.



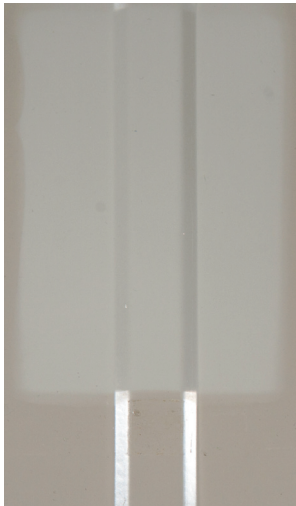


Morton's Steel Roll-Forming Machine

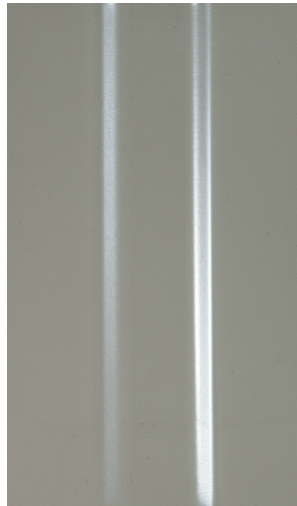
## FLUOROFLEX® Paint System



### Actual Photos of Fade Test Performed in QUV (accelerated weathering machine under identical conditions)



Polyester Used by Others



Morton's Paint System

## Why Morton?

We want your building to be one you are proud to show off and pass down to future generations. As a 100% employee-owned company, we are all committed to be the industry leader with a focus on innovation, service, quality, and most importantly, making sure each customer is completely satisfied with their decision to build Morton. It's the standard we set for ourselves and one you should expect for your next building project. The Morton Standard.

## Morton Materials

We only use No. 1 Southern Yellow Pine lumber for columns that are hydraulically compressed during the lamination process. Our treated lower columns are treated with .80 pounds per cubic ft of preservative and have a 50-year warranty. Other lumber used is quality No. 2 or better Spruce-Pine-Fir (SPF) with staggered joints for enhanced strength. The correct lumber and spacing is designed for each project. We roll-form our own steel from .019" thick coil, which is up to 25% heavier than the steel many other builders use, and Morton's panels feature a unique Hi-Rib design where the major ribs are 12" on center and 1" high with a gently rounded profile. This combination allows water to flow away from the fasteners and contributes to the strength and long-term attractiveness of a Morton.

## Superior Paint System

Morton offers the FLUOROFLEX® 1000 paint system, which consists of 70% PVDF topcoat or "color coat" and polyurethane primer that utilizes either a GALVALUME® or hot-dipped galvanized metallic coating. This superior paint system provides your building with multiple layers of protection against fading, chalking, paint peeling, and red rust. Because it resists the effects of ultraviolet rays, rain, and pollution, it retains color and gloss far longer than standard consumer or commercial paint coatings. Morton is proud to offer a 35-year warranty against chalking, fading, and peeling of FLUOROFLEX® 1000.

## Strongest Warranty

Our industry-leading warranties are handled in-house, include materials and labor, and are not pro-rated. Morton quality, guaranteed.

## Craftsmanship

The difference between a good building and a great building is craftsmanship. Regardless of the materials, a building is only as good as the people who construct it. At Morton, we are true craftsmen and we want to build structures that exceed your expectations. All of our crews are full-time and only construct our buildings. Our foremen have, on average, 16 years of experience. These are seasoned professionals who make a career at Morton and participate in continuous training.



Get Started Today @  
[mortonbuildings.com/MortonStandard](http://mortonbuildings.com/MortonStandard)